

## Benefits Enrollment Guide



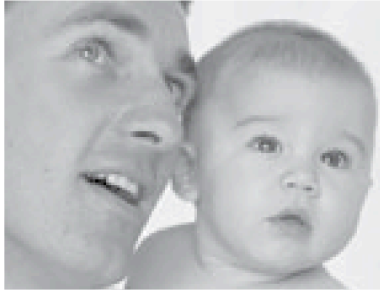
**Congratulations!!!**

**You are now eligible to enroll  
for Health Insurance Benefits**



**[www.BenefitProtect.com/A1](http://www.BenefitProtect.com/A1)  
Call 1 866 260-5100 today for details or a quote**

# YOUR BENEFITS - YOUR CHOICE



You are now eligible to select your benefits.

**Benefit Protect** provides a one-stop shop for your health benefit needs.

**All benefits solutions are customized to meet your individual needs and budget.**

### You can expect:

- Access to customized solutions that can result in significant savings
- Many options to fit your budget
- One-on-one consultation with a licensed benefit counselor
- You choose the level of coverage that meets your individual needs

## GREAT COVERAGE

\* You will need to Medically Qualify\*



### Sample Major Medical Health Insurance Rates:

	Plan A	Plan B	Plan C
Annual Deductible:	\$2,500	\$1,000	\$500
Monthly Premiums			
25 Year Old Male:	\$54.87	\$76.82	\$104.83
25 Year Old Female:	\$59.84	\$85.27	\$119.18
30 Year Old Male:	\$55.29	\$78.43	\$107.15
30 Year Old Female:	\$64.39	\$94.53	\$130.42
35 Year Old Male:	\$62.73	\$88.09	\$114.91
35 Year Old Female:	\$80.52	\$111.02	\$147.87
Annual Maximum:	\$100,000	\$100,000	\$100,000
Lifetime Maximum:	\$2,000,000	\$6,000,000	\$6,000,000

Plans are available with deductibles as low as \$500/year up to \$10,000/year. Plans vary by state and all options may not be available in all states. Major medical plans require individual underwriting prior to issuance of the policy. Premiums based on average May 2007 BenefitProtect policies.

## OUR MOST POPULAR OPTION

Sample Limited Medical Health Insurance Rates:

	Cost Per Week
Employee	\$ 20.54
Employee + Spouse	\$ 40.71
Employee + Child	\$ 39.00
Family	\$ 55.82

\*The monthly cost is a combined amount that includes insurance premiums, administrative costs and billing fees. Insurance Carriers vary by State.

\*Rates based are for a 45 year old in Arizona.

### Limited Medical Health Insurance:

- Covers the first \$75 spent at a doctor's office for up to 5 visits
- Includes Wellness Benefits
- Includes limited hospital, surgical, intensive care and nursing coverage
- Base plans pay up to \$750 on actual expenses on Emergency Care per occurrence
- Includes Prescription Drug Coverage
- Available to spouse and children
- Plans cover a portion of out patient X-Ray and Lab
- Utilize Doctor network for better discounts

## DON'T FORGET TO ASK ABOUT -

### Dental & Vision:

- NO CO-PAYS
- NO WAITING PERIODS
- Some plans cover braces
- Call for a quote

**OPTIONS UNDER \$5.00/WEEK**

### Term Life Insurance:

- Great rates on the policy amounts most requested
- GUARANTEED ISSUE of policies enrolled over the phone
- Policy pay-out amounts from \$5,000 to \$50,000
- Policies deliver peace of mind at a reasonable monthly cost

# BenefitProtect

[www.BenefitProtect.com/A1](http://www.BenefitProtect.com/A1)

Call 1 866 260-5100 to connect with a Benefit Counselor

Products and insurance carriers available vary by state.

BenefitProtect is a licensed insurance agent for insurance and benefit programs.